



TALBOT WALSH[®]
ENGRAVING & SIGNS

Letterbox and House Signs

Letterbox Backplates and Boxes

DESCRIPTION

Designed to compliment your stainless steel letterbox fascia these marine grade stainless steel, standard and premium backplates are ideal for the back of pillars or columns. With lock for secure mail retrieval.

The premium backplate can also be supplied with a stainless steel box assembly to suit the inside cavity of your wall or pillar. We have standard sizes for these boxes or we can customise to suit your installation.

?

TECHNICAL DETAILS

Supplied with tamperproof stainless steel screws and wall plugs.

MATERIALS AVAILABLE

- Satin finish stainless steel

PHONE
(08) 9470 5555

FAX
(08) 9470 4454

**181 STAR ST
CARLISLE
WA 6101
AUSTRALIA**

TECHNICAL ASSISTANCE
sales@talbotwalsh.com.au

WEBSITE
www.talbotwalsh.com.au

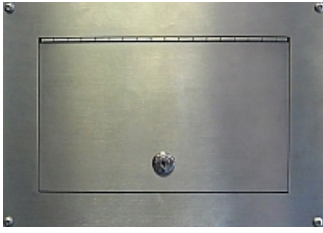
*Open Monday to Friday
from 8.30am to 5.00pm*

LINK TO THE
PRODUCT WEB PAGE



Letterbox Backplates and Boxes

PHOTOS



Premium Backplate 340 x 240 x 3mm



Premium Backplate and Box Assembly



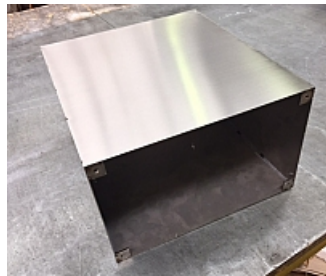
Box and Backplate Assembly



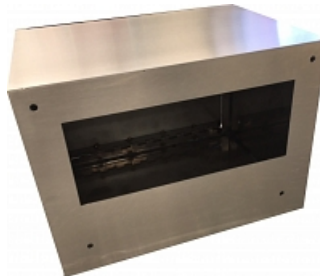
Box and Backplate Assembly



Flat Pack Box Assembly



Box and Backplate with fixing lugs



Box and Backplate with fixing holes



Custom size premium backplate



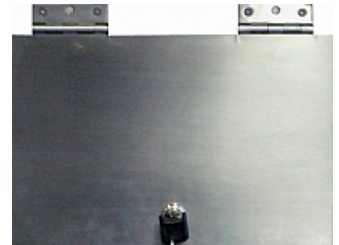
Custom size premium backplate powder coated satin black



Custom size premium backplate with newspaper hole



Custom size box with premium backplate



Standard Basic Backplate 300 x 200 x 2mm